



IDENTI
MEDICAL DATA SENSING

TOTALSENSE

Sensing your tissue and implant
inventory - from supplier to point of use

KEY FACTS on IDENTI

We are at the forefront of health tech:

- **7 international patents**
- AI, machine learning, RFID, image recognition
- Innovation Award by **Frost & Sullivan**

We are established in our field:

- Listed company on TASE
- Hundreds of installations worldwide

Products suited to all healthcare settings:

- Hospitals, ASCs, medical providers, device manufacturers and international logistics companies

2022
New Product Innovation
Award

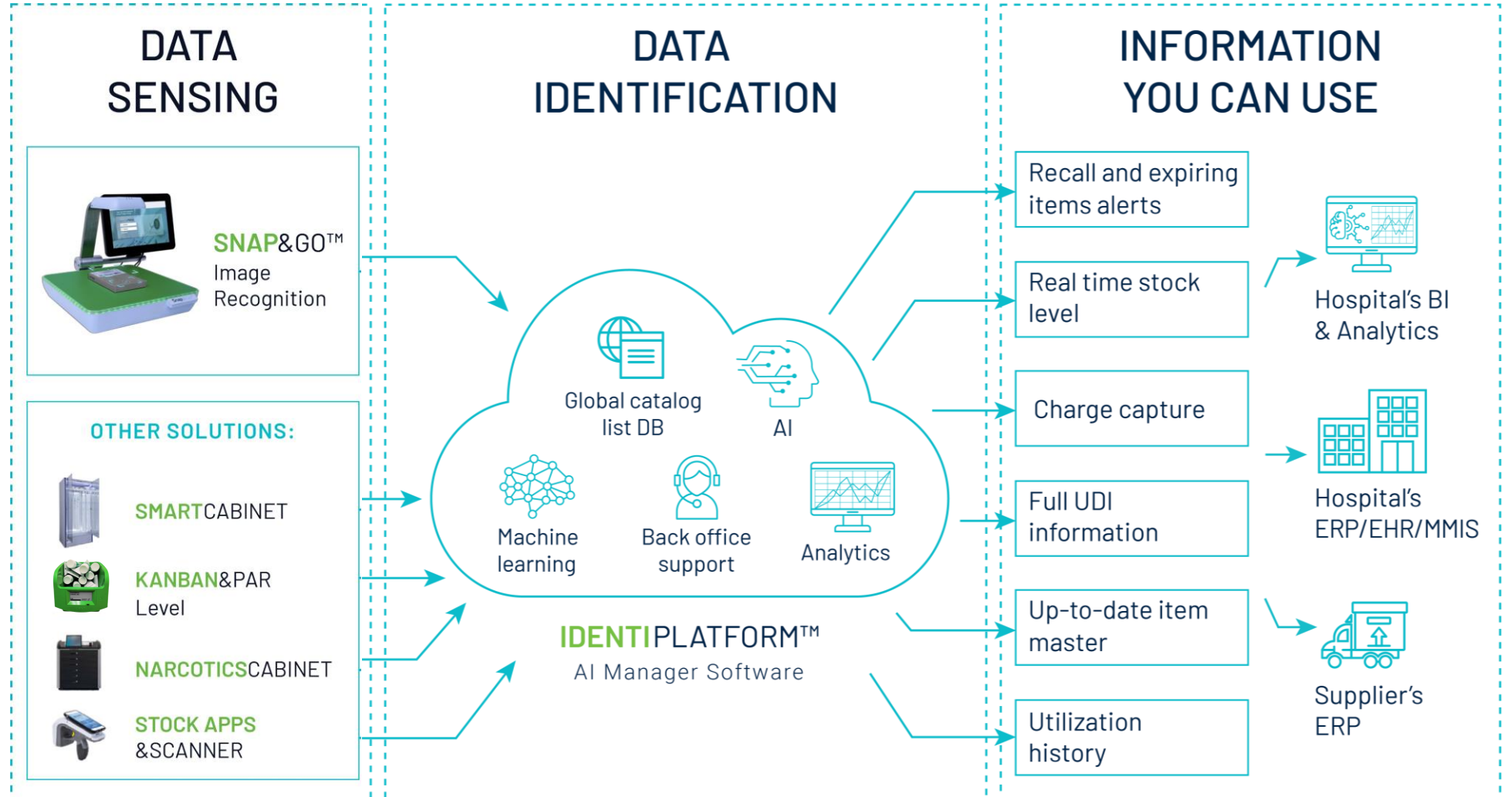
The European Operating Room
Inventory Management Solutions
Industry

FROST & SULLIVAN



IDENTI: THE COMPLETE SERVICE

A platform that includes automated and autonomous tools, with **hardware, software, database and connectivity products.**



IDENTIPLATFORM THE 'BRAIN' BEHIND THE TOOLS

IDENTIPLATFORM™



Centralized global database

combines raw data of medical manufacturers' SKUs in one data pool.
Updated daily



Machine Learning and AI algorithms

leverage deep learning and prediction models to improve performance and optimize data-driven decisions



Cloud-based platform

Microsoft Azure. Instant notification of item activity in real time to all stakeholders



Interoperability between systems

and flexible interface engine connect all supply chain stakeholders together



Data analytics & push notifications

featured in a sophisticated admin dashboard for real-time troubleshooting



Back-office 24/7 service

24/7 in-house support team fixing 'bad data' to maintain a consolidated hospital item master

WE FACE YOUR CHALLENGES EVERY DAY

Inventory
waste

Manual
inventory
management

Zero
sentinel
events

Product
tracking
standardization

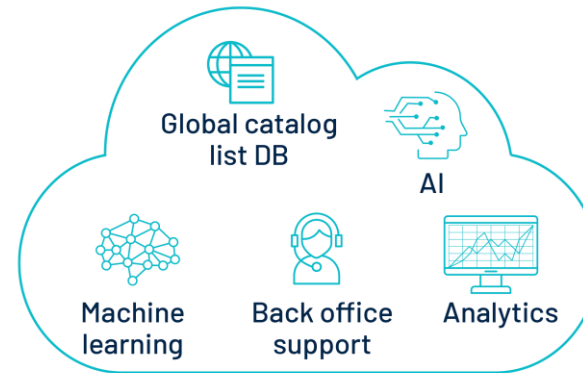
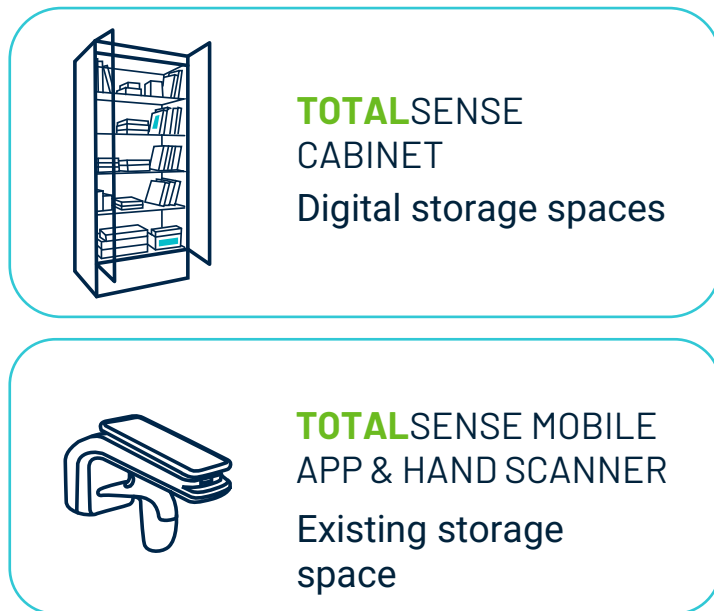
Consigned
inventory

The manual and cumbersome workflows used to manage inventory, cause hospitals and vendors to **lose money**.

END TO END SOLUTION

HARDWARE TRACKING TOOLS

SOFTWARE CLOUD-BASED AI MANAGEMENT



Cloud-based software that connects a hospital's ERP/EHR/MMIS systems to suppliers - enabling efficient stock management within one central platform.

- ✓ Clear and safe view of the current stock and usage
- ✓ Digital transformation of OR and other procedural spaces

TOTAL SENSE: MAIN BENEFITS



“Grab & go” implant & tissue tracking

Automatic, real-time tracking of any type of implant, medical device, tissue or surgical consumable...at item level. From arrival to consumption



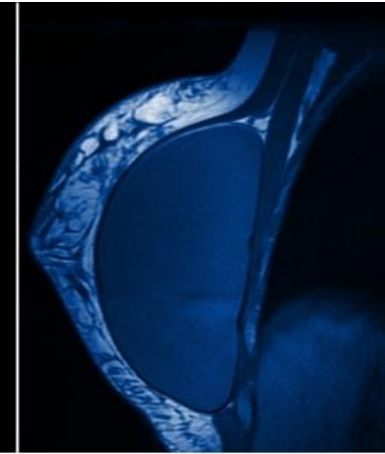
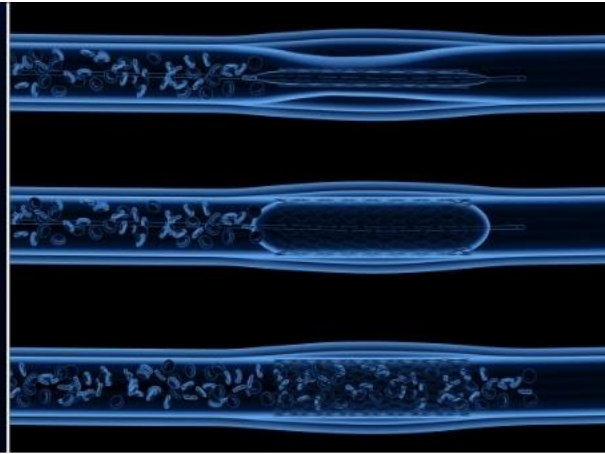
Safety and inefficiency alerts

Reduces patient risk by alerting nurses to expired or recalled products



Responsive, secure procurement – for stock or consignment

Full stock visibility via the cloud allows supplier and hospital to mutually and responsibly consign remote tissue and implant



VALUE PROPOSITION

HOSPITALS

- Complete inventory control via visibility **at item level**
- No stock outs. No waste. No expired products
- Elimination of manual counting
- Optimization of inventory levels
- Immediate ROI and significant cost savings
- Enabling consignment and online dispute resolution
- Full transparency with vendors - joint inventory tracking
- Increased revenue capture: 99% Charge capture

VALUE PROPOSITION

VENDORS

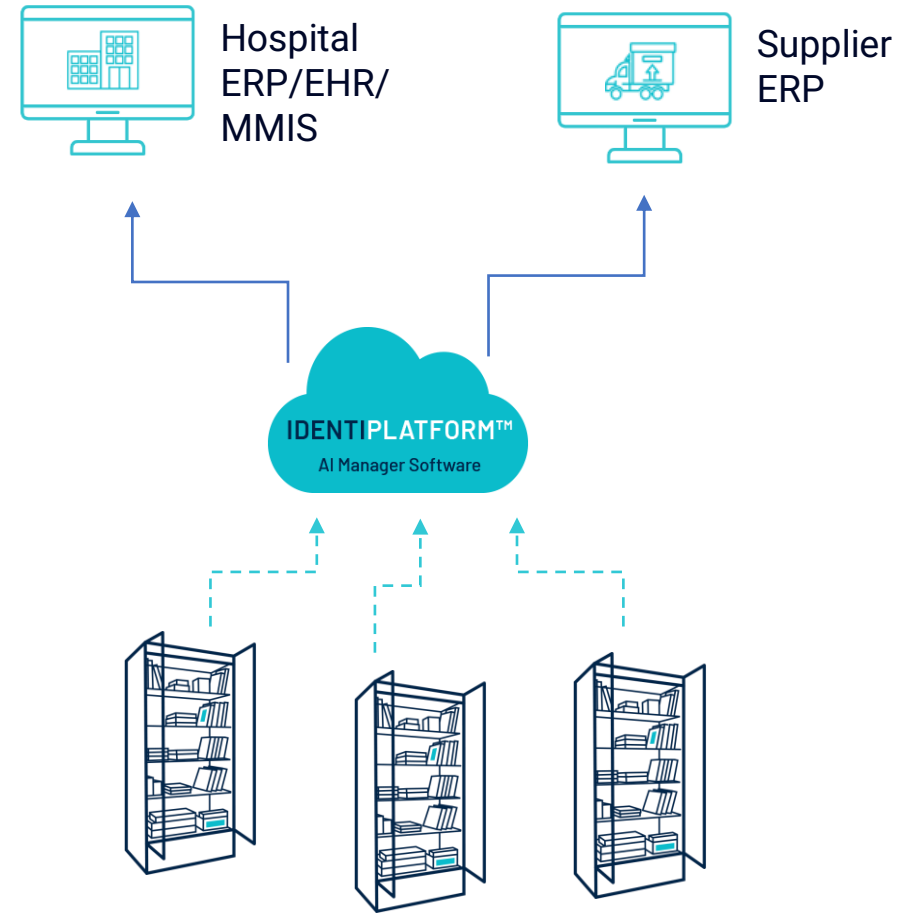
- 30%- 40% reduction of consignment inventory
- 0% expired items
- Cost effective management of high and low frequency items
- No emergency shipments - products always available at POU
- Billing time reduced by 30%
- Automatic replenishment and no manual counting
- Quickly detect faults and resolve issues with real-time alerts
- Electronic management of recalls
- Unified cataloging of products



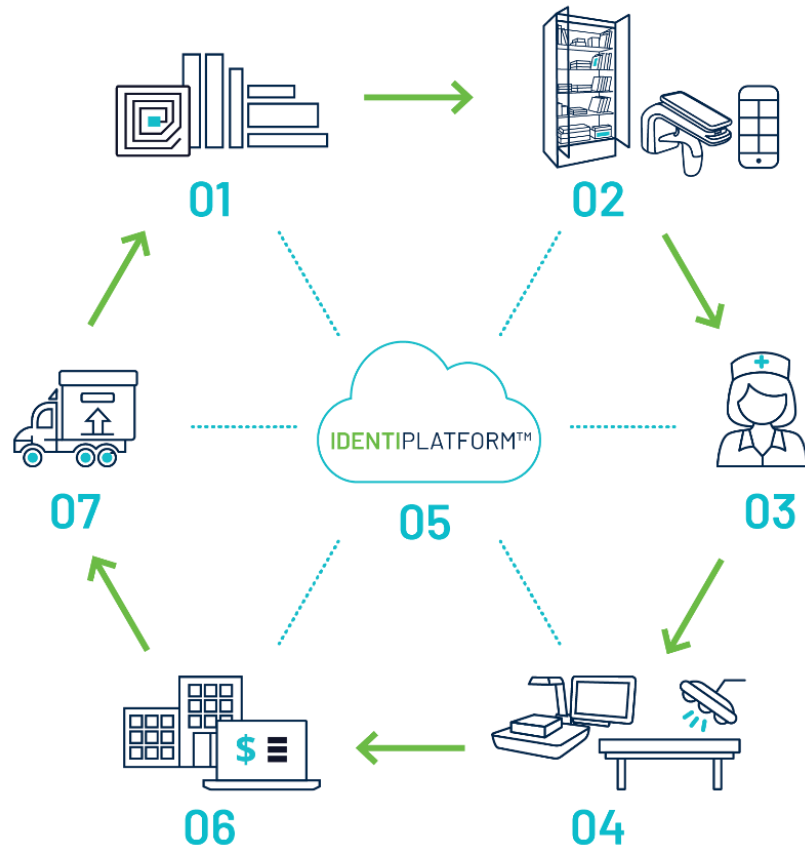
TOTALSENSE
HARDWARE

Full tracking solution including UHF RFID cabinets and a reporting station

- ✓ Remote inventory management
 - ✓ Wireless connectivity to central data warehouse
 - ✓ Cloud application with access to all parties
 - ✓ Item level traceability and management
- **Which item was taken?** (fully automated mode)
 - **Which item was taken and by whom?** (access control)
 - **Which item was taken by whom and for which procedure?** (access control + smart reporting)



HOW IT WORKS



- 01 Each item is marked with an RFID tag.
As soon as each item is placed in the cabinet it is automatically tracked, eg. expiration date and batch # for recall management. Real-time inventory vision is achieved. The inventory status of tagged items in other storage locations can be checked using the scanner and app.
- 02
- 03 Auto-tracking of item removal and return, linked to the individual staff member.
- 04 Nurse reports all items used.
- 05 Real-time consumption information is now updated and analyzed in the IdentiPlatform AI management software.
- 06 IdentiPlatform™ drives relevant information to the hospital EHR/ERP and Supplier ERP systems and provides a comprehensive list of reports.
- 07 Full consignment is possible with a direct link between manufacturers' warehouses and points of use.

END TO END SOLUTION

- ✓ **Patent-protected UHF RFID technology**
The new generation of RFID. The cabinet works both with HF and UHF for maximum flexibility
- ✓ **Centralized global database**
Combines the raw data of thousands of medical manufacturers' SKUs in one data pool
- ✓ **Complies with FDA UDI**
(Unique Device Identification) regulations and GS1 (GTIN) standards
- ✓ **Plug-n-play**
Same-day installment of the complete system
- ✓ **Instant notification**
of item activity in real time to all stakeholders
- ✓ **No attached screen**
Real 'grab & go'



01
Secured glass doors
with blue lighting



02
Patent-protected
UHF RFID antennas



03
Personal
identification &
restricted access



04
Personalized
internal design

FUNCTIONAL CONFIGURATIONS



**HANGING
ITEMS**



SHELVES



DRAWERS



**SHELVES AND
DRAWERS**



**LONG ITEMS
AND SHELVES**



**STANDING
ITEMS**



**MINI
CABINET**



**REMOVABLE
DRAWERS**

SUITABLE FOR MULTIPLE LOCATIONS

- Cath-Lab
- IR
- EP
- Ophthalmology
- Orthopedic implants
- Sutures
- OR
- Gastrology Labs
- Cosmetic Implants



TOTALSENSE MOBILE APP & HAND SCANNER

- ✓ **Compare**
Actual inventory vs. the required level listed in the ERP
- ✓ **Bridge gaps**
by triggering an automatic replenishment order
- ✓ **Fit to any storage facility**
(shelves, drawers)
- ✓ **Automated counting**
reduce human error and labor
- ✓ **External interfaces**
All information is sent via cellular connection thru IdentiPlatform to hospital and vendor systems
- ✓ **Streamline reps work**
the app is associated with the rep and is not dependent on the number of hospitals, making it an efficient tool for periodical validation



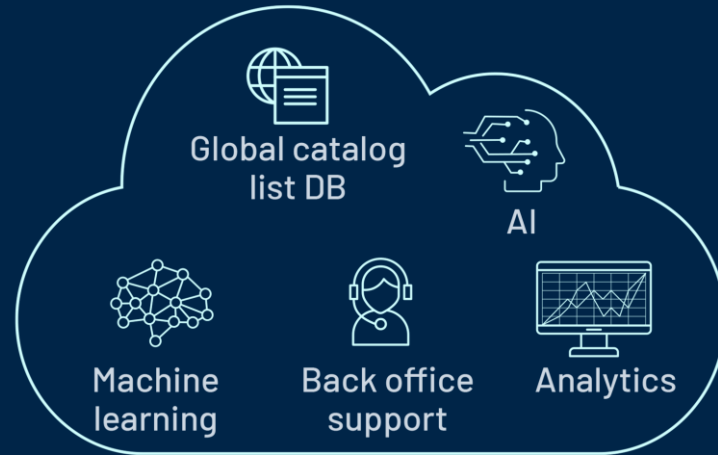
01
RFID hand scanner

02
IDENTI mobile application



03
Count single click to count the inventory

04
Locate a product by batch, catalog no. or RFID tag ID



IDENTIPLATFORM™

TOTALSENSE
SOFTWARE

IDENTIPLATFORM - AI MANAGEMENT SOFTWARE

- ✓ **Centralized global database**
Combines the raw data of thousands of medical manufacturers' SKUs in one data pool
- ✓ **Joint management**
Single platform for hospitals and suppliers to actively monitor and provide feedback
- ✓ **Wireless connectivity**
to central data warehouse
- ✓ **User-friendly interface**
Easy-to-use dashboard and built-in administration module
- ✓ **No operating system**
only SaaS connected through simple coding



IDENTIPLATFORM - SAMPLE OF SYSTEM REPORTS

CATALOG LIST

Lists the products and their GS1 barcode information defined in the IdentiPlatform database

INVENTORY REPORT

Shows the inventory defined by hospital / department / room

EXPIRED ITEMS REPORT

Shows the due-to-expire and expired items in the current inventory

TRACKING REMOVED ITEMS REPORT

Shows which items were removed from the smart cabinet and by whom

CONSUMPTION REPORTING

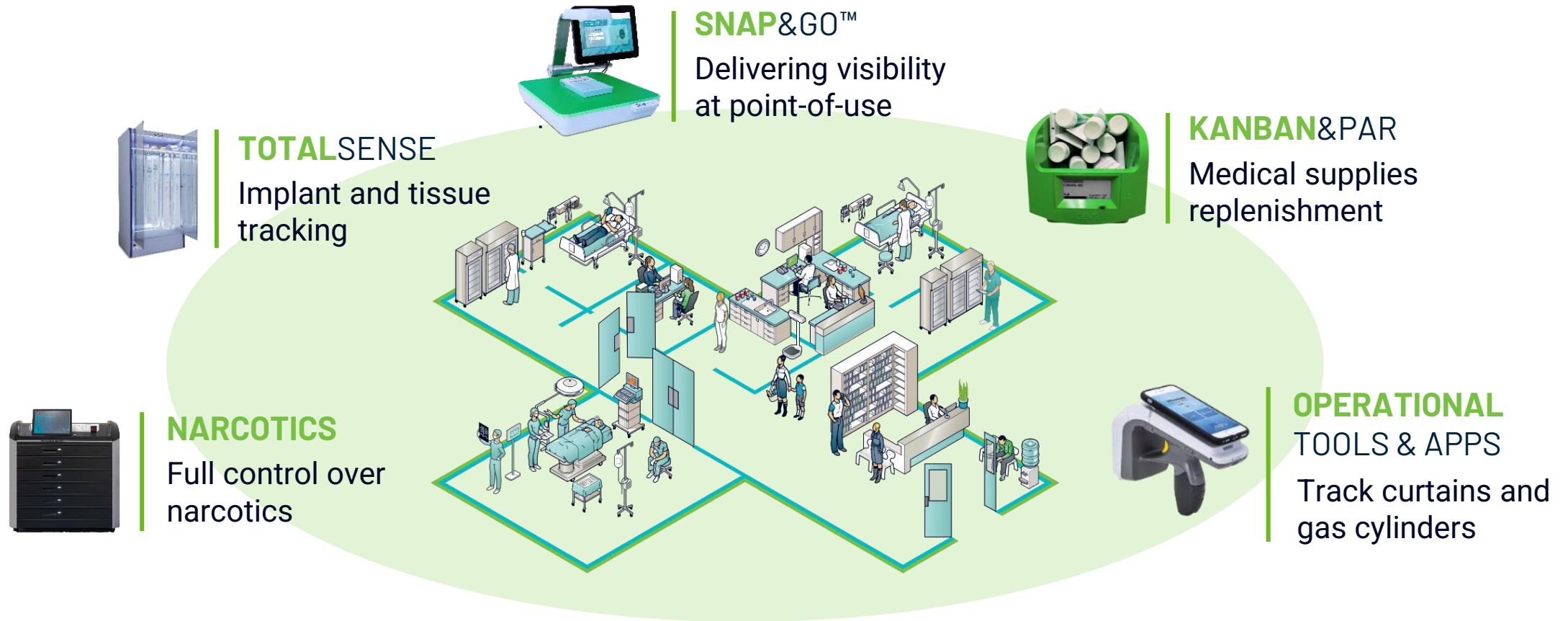
Reports item usage to the patient's procedure ID and Utilization analysis

Short Expiration
100
200
300
400
500
600
700
800
900
1000

Catalog ID	Hospital	Invoice	Expiration
5076-52	Assuta	DN3124853	15/01/2016
5076-52	Assuta	DN3124854	15/01/2016
5076-58	Assuta	DN3124851	02/11/2015
5092-58	Assuta		
5592-53	Assuta		
5592-53	Assuta		
6207bW	Assuta		



DATA SENSING TOOLS



Designed to fit into current workflows and lighten the burden on teams working in operating and procedure rooms.

OUR CUSTOMERS





THANK YOU

IDENTI

MEDICAL DATA SENSING

www.IDENTIMEDICAL.com