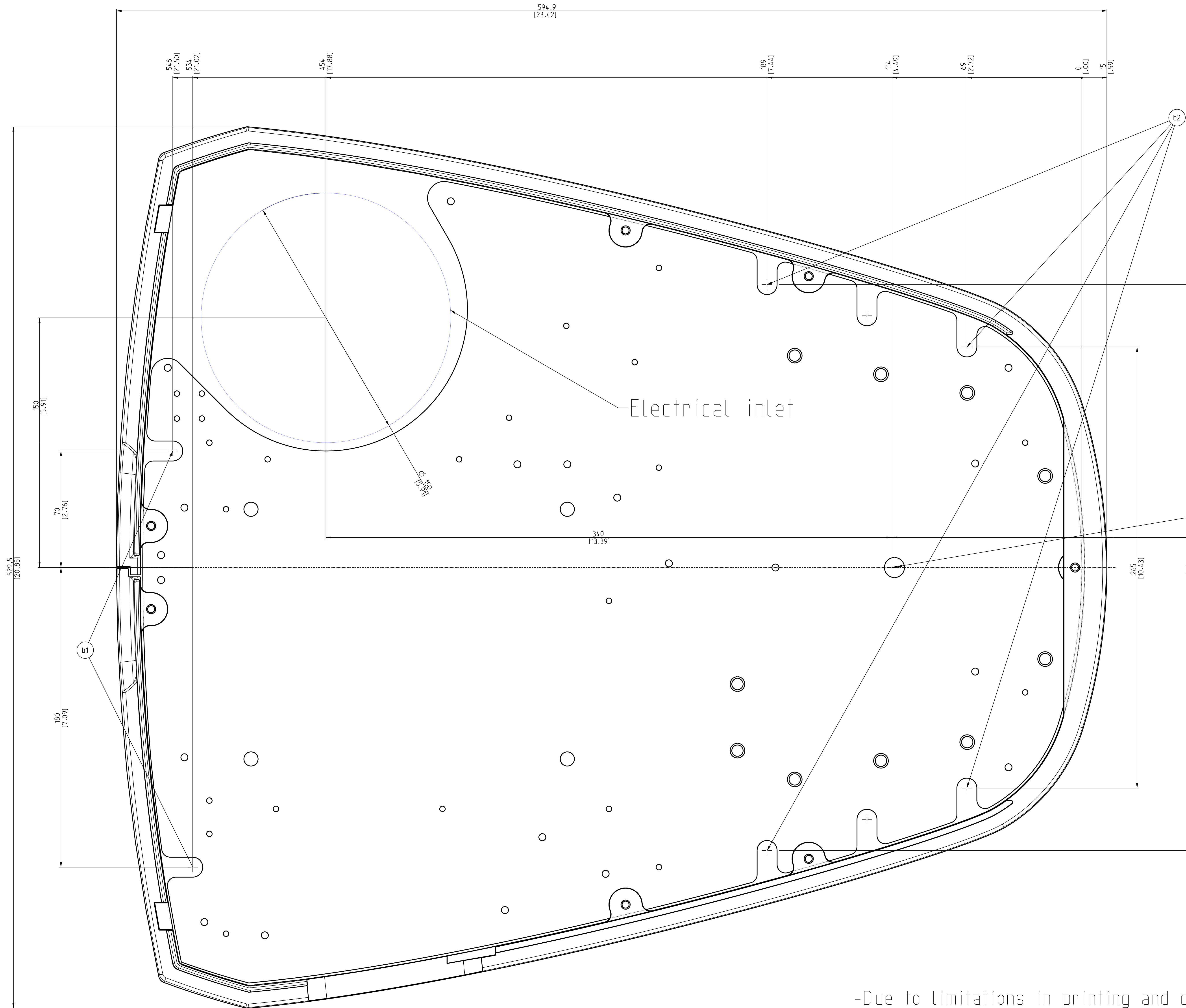
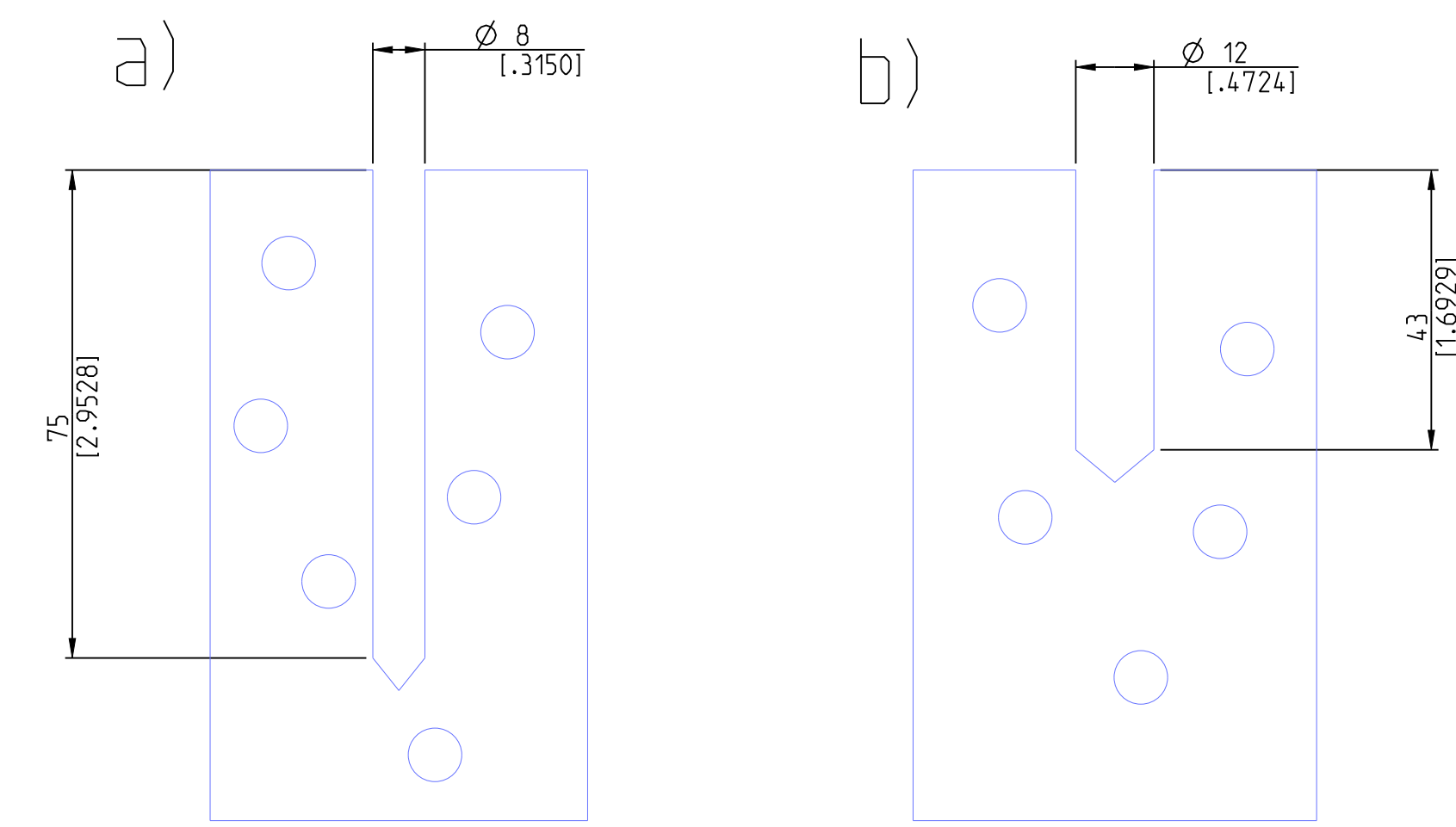


The floor must be straight within 1%.  
 Antistatic floor materials should be preferred.  
 The concrete must be 100mm (4in.) thick.  
 The concrete strength must be type C20/25-C50/60 (According to standard EN 206-1:2000), non-cracked concrete.  
 Use attachment elements provided by Planmecca.



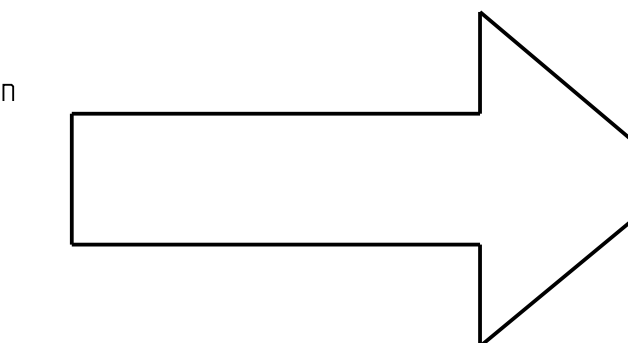
INSTALLATION OPTIONS

- a) Concrete screw anchor (Ø8)
- b) Drop-in anchor (M10)

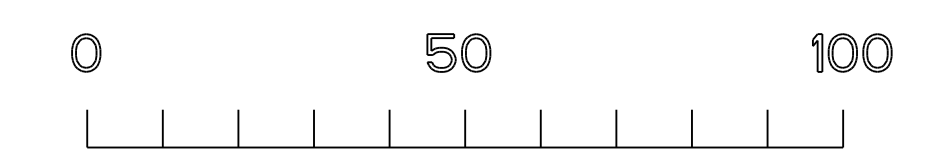


Please refer to document 30039577 for more detailed information on floor interface.

Reference point (INDEI) Center point not at hole center.  
 800  
 [315.04]  
 Distance from patient headrest end when extended to outmost position.  
 For more dimensions see document 30039577.



Patient headrest direction



-Due to limitations in printing and copying procedures this template may not accurately correspond to the actual product.  
 -All dimensions are approximate.  
 -All dimensions are subject to change without prior notification.  
 -Planmecca Oy reserves the right to change this template and installation scheme without prior notification.

Description of changes		Headrest end dimension added, dimension to outmost extended position.	
Name	Installation template for F50 Chair		
Appr. /			
Drawn			
General			
Approved and e-signed	15-Mar-2024 09:50	Reviewed and e-signed	14-Mar-2024 10:58
Vesalainen, Markus (vesalma)	Harpola, Mikko (harpom)	Designer	14-Mar-2024 10:48
PLANMECCA		Released	
1:1		Scale	1:1
30037660 - C		Revision	