

# Planmeca Creo<sup>®</sup> C5

The ultimate dental 3D printer



ENGLISH

**PLANMECA**

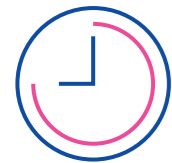
# Why 3D printing?

The applications you need – when you need them

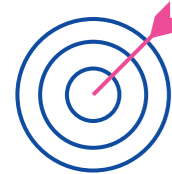
*Every dental application is different – which is why their production can be time-consuming and costly. But this is not the case anymore. 3D printing enables fabricating customised dental applications in a fraction of the usual time. The key to everything is a 3D printer that is fast, durable, and uses printer-optimised materials designed specifically for dentistry.*



Print the applications you need when you need them for quicker and smoother treatments



Save time and resources by producing several models at once



Obtain predictable, industry-grade results with a device targeted for dentistry



Take charge of your workflow from start to finish



Store and transfer your 3D models digitally for easy access and use



Add value to your clinic with new production capabilities

Create your vision



# Planmeca Creo® C5

The exceptionally fast dental 3D printer

Planmeca Creo® C5 is the combination of speed and precision you have been waiting for. Designed specifically for dental professionals, the durable and compact 3D printer enables fabricating dental applications, such as surgical guides, dental models and aligner bases, while you wait.

## Sophisticated material handling

The dedicated printing materials for Planmeca Creo® C5 come in convenient bottles, ensuring a smooth and flexible workflow in which the valuable materials are always utilised efficiently.



## Speed and performance

Combining high speed with high repeatability, this 3D printer is truly made to perform.

## Industry quality at an accessible price

A professional grade 3D printer that is both reliable and cost-effective. Designed and manufactured in Finland.

## From professionals to professionals

Developed in cooperation with some of the best clinical experts in dental technology.

## Printer-optimised materials

The printing materials are printer-optimised as well as medically approved (when applicable) to ensure a safe, high-quality result.



## Full-aluminium body

Durable, rigid and stable all-metal construction.

## As easy as pressing a button

The easy-to-use touch display guides you every step of the way. Comes with pre-programmed and optimised material settings – no need to set parameters.

## A true chairside 3D printer

A compact printer with a streamlined design which sits perfectly on a countertop or desk.

## Monochrome LCD printing technology

Cooler, quieter and quicker 3D printing with monochrome LCD technology. No calibration needed – just plug and print!

## Printing materials

SURGICAL GUIDES	FotoDent guide KeyGuide	DENTAL AND ORTHODONTIC MODELS	FotoDent model2 KeyModel Ultra Ivory
PERMANENT RESTORATIONS	VarseoSmile Crown plus	GINGIVA SEGMENTS IN DENTAL MODELS	FotoDent gingiva
TEMPORARY RESTORATIONS	VarseoSmile Temp	BLEACHING TRAYS	KeySplint Soft
DENTURES	VarseoSmile Teeth	IMPRESSION TRAYS	FotoDent tray
TRIAL DENTURES	KeyDenture Try-In	INDIRECT BONDING TRAYS	FotoDent IBT
DENTURE BASES	FotoDent denture		
SPLINTS AND NIGHT GUARDS	KeySplint Soft KeySplint Hard		

## Specifications

Open import	STL, PLY
Printing technology	Monochrome LCD
Build area	128 x 78 x 100 mm (5.0 x 3.1 x 4.0 in.)
Dimensions	Ø 300 mm (11.8 in.), h 500 mm (19.7 in.)
X,Y resolution	50 µm
Z resolution	25–100 µm
Weight	32 kg (70.5 lbs)

Planmeca Oy  
 Planmeca Creo C5  
 Planmeca Emerald S  
 Planmeca Romexis  
 Planmeca Viso G7

BEGO GmbH & Co. KG | VarseoSmile Crown plus | VarseoSmile Temp | VarseoSmile Teeth  
 Dreve Dentamid GmbH | FotoDent guide | FotoDent denture | FotoDent tray | FotoDent IBT  
 Keystone Industries | KeyGuide | KeyDenture | KeySplint Soft | KeySplint Hard

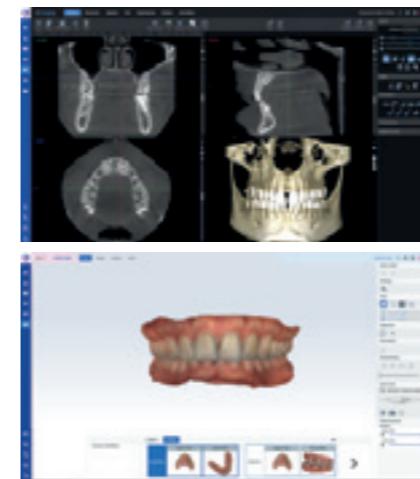
# Seamless implant guide workflow

Stop guessing and start performing precise surgery

Planmeca offers a unique complete workflow for producing implant guides. Use any Planmeca CBCT unit to obtain an image of the area of interest and capture a digital impression with a Planmeca intraoral scanner. Create the implant guide and a printable dental model in the **Planmeca Romexis®** software. Proceed to printing directly with **Planmeca Creo® C5**. Done.

## Scan

Acquire a cone beam image of the area of interest with any Planmeca CBCT unit. Obtain a digital impression with a Planmeca intraoral scanner, such as the quick and precise **Planmeca Emerald® S**.



## Design

Analyse the data in the powerful **Planmeca Romexis®** software and create a complete virtual setup for the implant plan. Then use your plan to design an implant guide and add a base to your digital impression to create a printable dental model with just a few clicks.



## 3D Print

Print the implant guide and dental model with the lightning-fast **Planmeca Creo® C5**.





Planmeca Oy designs and manufactures a full line of industry-leading dental equipment, including 3D and 2D imaging devices, CAD/CAM solutions, dental care units and software. Planmeca Oy, the parent company of the Finnish Planmeca Group, is strongly committed to better care through innovation, and it is the largest privately held company in the field.

Follow us on social media!



# PLANMECA

**Asentajankatu 6 | 00880 Helsinki | Finland | tel. +358 20 7795 500 | fax +358 20 7795 555 | sales@planmeca.com | www.planmeca.com**

Images may contain optional items not included in standard delivery. Available configurations and features may have country or area specific variations. Some products displayed above may not be available in all countries or areas. Rights for changes reserved.

Planmeca, All in one, Anamat Plus, Cobra, Comfy, Digital perfection, Economat Plus, Elegant, Flexy, Perio Fresh, PlanEasyMill, Planmeca 4D, Planmeca AINO, Planmeca ARA, Planmeca CAD/CAM, Planmeca CALM, Planmeca Curiosity, Planmeca Chair, Planmeca Clarify, Planmeca Compact, Planmeca ConBo, Planmeca CORE, Planmeca Creo, Planmeca Emerald, Planmeca FIT, Planmeca Imprex, Planmeca Intra, Planmeca iRomexis, Planmeca Lumion, Planmeca Lumo, Planmeca Maximity, Planmeca Minea, Planmeca Minendo, Planmeca Minetto, Planmeca mRomexis, Planmeca Noma, Planmeca Olo, Planmeca Online, Planmeca Piezon, Planmeca PlanCAD, Planmeca PlanCAM, Planmeca PlanClear, Planmeca PlanDesk, Planmeca PlanID, Planmeca PlanMill, Planmeca Planosil, Planmeca PlanPure, Planmeca PlanScan, Planmeca PlanView, Planmeca Pro50, Planmeca ProCeph, Planmeca ProFace, Planmeca ProID, Planmeca ProMax, Planmeca ProModel, Planmeca ProOne, Planmeca ProScanner, Planmeca ProSensor, Planmeca ProX, Planmeca Romexis, Planmeca Serenus, Planmeca SingLED, Planmeca SmartGUI, Planmeca Solanna, Planmeca Sovereign, Planmeca Ultra Low Dose, Planmeca Verity, Planmeca Vision, Planmeca Viso, Planmeca Waterline Cleaning System, Planmeca Xtremity, Proline Dental Stool, ProTouch, SmartPan, SmartTouch, Trendy, and Ultra Relax are registered or non-registered trademarks of Planmeca in various countries.